

The Future of the Forum



Christopher Cutts
Forth Estuary Forum
17th Annual Conference, January 31 2011

A Brief History

- Forth Integrated Management Strategy (1999)
- Informs annual work plan e.g.
 - Forth Access Initiative (2002)
 - Coastal Litter Campaign (ongoing), including Beach Litter Education Pack
 - Friends of the Forth
 - Established the first Scottish 'managed realignment' feasibility study
 - Produce leaflets e.g. 'Wildlife Around the Forth' and 'On the Forth - a Leisure Craft Users Guide to the Firth of Forth'

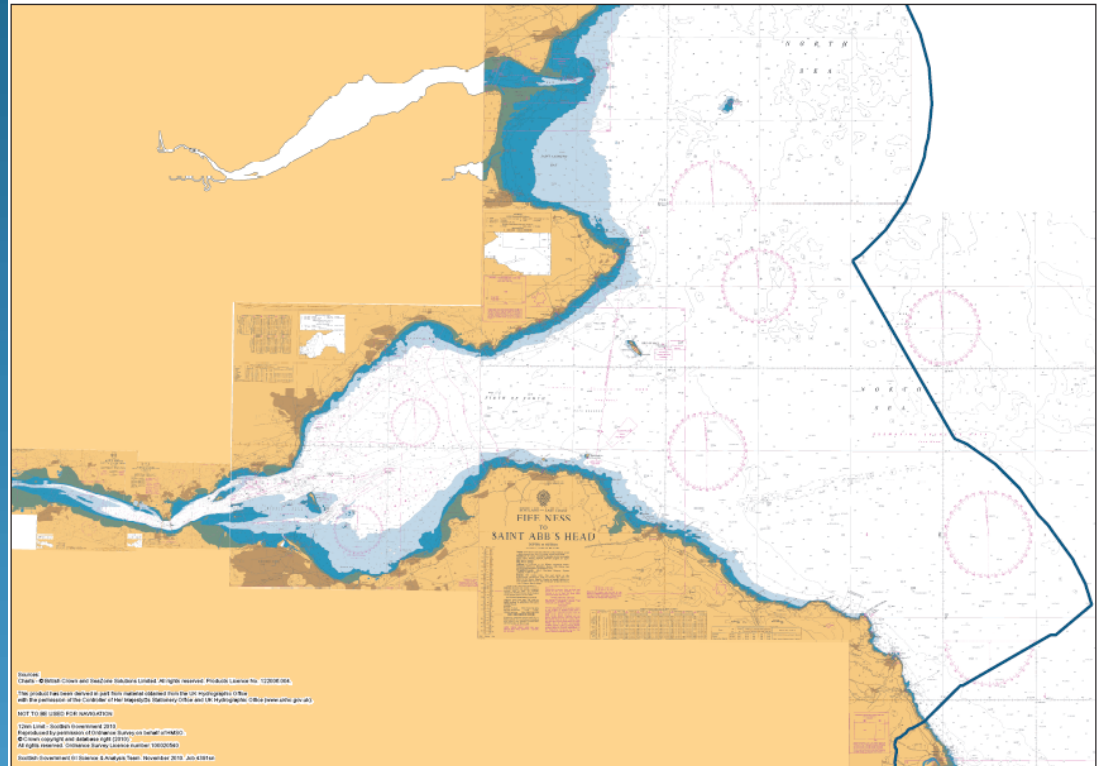
A Brief History

More recently:

- Cramond panels design and installation;
 - Chaired a stakeholder engagement workshop on offshore wind farm site at the beginning of the consultation process;
 - Chaired an 'MSC on the Menu' event, co-organised with the Marine Stewardship Council and Edinburgh Zoo;
 - Submitted a coastal interpretation signage trail application with the Edinburgh Biodiversity Partnership.
-
- Core funding now comes from Marine Scotland

Sectoral Interaction Matrices

- Understanding perceptions of sectors within the Forth
- Prelude to preparing local marine plan:
 - Nature, extent (spatial & temporal), intensity of interactions of activities within the Forth
 - Evaluate ability of existing management plans to address conflicts.



Sectoral Interaction Matrices

Sectors:

- Renewable Energy
- Subsea cables & pipelines
- Inshore fisheries
- Shipping & Transport
- Ports & harbours
- Maritime safety
- Recreation & Tourism
- Naval Defence
- Natural Heritage Management
- Landscape & Seascape Management
- Environmental Quality Management
- Historic/Cultural Heritage Management
- Coastal Development
- Waste Management

Sectoral Interaction Matrices

- Nature of interactions: positive, negative or neutral
- Visualised as a colour coded matrix
- Sectoral representatives to populate customised matrices with data
- Need to gather spatial information:
 - Follow up phone interview or meeting

Sectoral Interaction Matrices

SOMER FISH or CLIGUE FISH Sectoral Interactions Study - Results		Renewable Energy Scottish Renewables Forum					Subsea cables and pipelines			Inshore Fisheries Clyde Fishermen's Association				Inshore Fisheries Scottish Creelers and Divers		Aquaculture Scottish Salmon Producers' Association		Aquaculture Shellfish						
Subsectors		Offshore Wind	Wave	Tidal stream	Tidal barrage	Micro-tessellated renewables	Electricity	Oil/Gas Pipelines	Telecomms	Nephrops trawl	Scallop dredge	Demersal trawl	Pelagic trawl	Langhines	Creel	Dive	Intertidal shellfish (scallop etc)	Precooking	Darksea finfish	Offshore finfish	Precooking	Shellfish		
Sectors																								
Renewable Energy	Offshore Wind		Neutral	Facilitate	Neutral	Neutral	Compliment	Compliment	Compliment	Compliment	Compliment	Compliment	Compliment	Compliment	Neutral	Neutral			Neutral	Facilitate	Neutral	Neutral	Neutral	
	Wave	Neutral		Neutral	Neutral	Neutral									Compliment	Compliment	Compliment	Compliment	Compliment	Compliment	Compliment	Compliment	Compliment	Compliment
	Tidal stream	Facilitate	Neutral		Neutral	Neutral									Compliment	Compliment	Compliment	Compliment	Compliment	Compliment	Compliment	Compliment	Compliment	Compliment
	Tidal barrage																							
	Micro-tessellated																							
Subsea cables and pipelines	Electricity	Compliment	Neutral	Neutral	Neutral	Neutral				Compliment	Compliment	Compliment	Compliment		Neutral	Neutral			Neutral	Neutral	Neutral	Neutral	Neutral	
	Oil/Gas Pipelines	Compliment	Neutral	Neutral	Neutral	Neutral				Compliment	Compliment	Compliment	Compliment		Neutral	Neutral			Conflicting	Conflicting	Neutral	Neutral	Neutral	
	Telecomms	Compliment	Neutral	Neutral	Neutral	Neutral				Compliment	Compliment	Compliment	Compliment		Neutral	Neutral			Neutral	Neutral	Neutral	Neutral	Neutral	
Inshore fisheries	Nephrops trawl	Neutral	Neutral	Neutral	Neutral	Neutral					Neutral	Neutral	Neutral		Conflicting	Conflicting			Neutral	Conflicting	Neutral	Compliment	Compliment	
	Scallop dredge	Compliment	Neutral	Neutral	Compliment	Neutral				Neutral	Neutral	Neutral	Neutral		Conflicting	Conflicting			Neutral	Conflicting	Neutral	Conflicting	Compliment	
	Demersal trawl	Compliment	Neutral	Neutral	Compliment	Neutral				Neutral	Neutral	Neutral	Neutral		Neutral	Neutral			Neutral	Conflicting	Neutral	Compliment	Compliment	
	Pelagic trawl	Compliment	Neutral	Neutral	Compliment	Neutral				Neutral	Neutral	Neutral	Neutral		Neutral	Neutral			Neutral	Conflicting	Neutral	Neutral	Neutral	
	Langhines	Compliment	Neutral	Neutral	Compliment	Neutral													Neutral	Conflicting	Neutral	Neutral	Neutral	
	Creel	Compliment	Neutral	Conflicting	Compliment	Neutral				Compliment	Compliment	Compliment	Compliment			Compliment			Neutral	Conflicting	Neutral	Neutral	Neutral	
	Dive	Neutral	Neutral	Conflicting	Neutral	Neutral				Compliment	Compliment	Compliment	Compliment		Compliment				Neutral	Conflicting	Neutral	Compliment	Compliment	
	Intertidal shellfish																							
Aquaculture	Precooking	Neutral	Neutral	Neutral	Neutral	Neutral									Neutral	Neutral			Neutral	Neutral	Neutral	Neutral	Neutral	
	Darksea finfish	Neutral	Neutral	Neutral	Neutral	Facilitate									Neutral	Neutral			Facilitate	Facilitate	Facilitate	Compliment	Compliment	
	Offshore finfish	Compliment	Neutral	Neutral	Compliment	Facilitate				Incompatible	Incompatible	Incompatible	Incompatible		Incompatible	Incompatible			Facilitate	Facilitate	Facilitate	Compliment	Compliment	
	Precooking	Neutral	Neutral	Neutral	Neutral	Neutral									Incompatible	Incompatible			Facilitate	Facilitate	Facilitate	Neutral	Neutral	
	Shellfish	Compliment	Neutral	Neutral	Compliment	Facilitate				Incompatible	Incompatible	Incompatible	Incompatible		Incompatible	Incompatible			Facilitate	Facilitate	Facilitate	Compliment	Compliment	
Shipping and transport	Tankers	Compliment	Neutral	Compliment	Compliment	Neutral				Compliment	Compliment	Compliment	Compliment		Neutral	Neutral			Neutral	Conflicting	Neutral	Conflicting	Conflicting	
	Bulk carriers	Compliment	Neutral	Compliment	Compliment	Neutral				Compliment	Compliment	Compliment	Compliment		Neutral	Neutral			Neutral	Conflicting	Neutral	Neutral	Neutral	
	Container vessels	Neutral	Compliment	Compliment	Compliment	Neutral				Compliment	Compliment	Compliment	Compliment		Neutral	Neutral			Neutral	Conflicting	Neutral	Neutral	Neutral	
	Coastal bulk cargo	Compliment	Neutral	Compliment	Compliment	Neutral				Compliment	Compliment	Compliment	Compliment		Neutral	Neutral			Neutral	Facilitate	Neutral	Neutral	Neutral	
	Ferries	Compliment	Neutral	Compliment	Compliment	Neutral				Compliment	Compliment	Compliment	Compliment		Incompatible	Neutral			Neutral	Conflicting	Neutral	Neutral	Neutral	
	Cruise ships	Compliment	Neutral	Compliment	Compliment	Neutral				Compliment	Compliment	Compliment	Compliment		Conflicting	Neutral			Neutral	Conflicting	Neutral	Neutral	Neutral	
Ports and harbours	Large ports	Facilitate	Neutral	Facilitate	Facilitate	Facilitate				Neutral	Neutral	Neutral	Neutral		Neutral	Neutral			Neutral	Neutral	Neutral	Neutral	Neutral	
	Medium Ports	Facilitate	Neutral	Facilitate	Facilitate	Facilitate				Neutral	Neutral	Neutral	Neutral		Facilitate	Neutral			Neutral	Neutral	Neutral	Neutral	Neutral	
	Small Ports	Neutral	Neutral	Neutral	Neutral	Facilitate				Facilitate	Facilitate	Facilitate	Facilitate		Facilitate	Facilitate			Neutral	Neutral	Neutral	Neutral	Neutral	
	Piers and Jetties	Neutral	Neutral	Neutral	Neutral	Facilitate				Facilitate	Facilitate	Facilitate	Facilitate		Facilitate	Facilitate			Neutral	Neutral	Neutral	Neutral	Neutral	
	Dredging	Neutral	Neutral	Neutral	Neutral	Neutral				Compliment	Compliment	Neutral	Neutral		Neutral	Neutral			Conflicting	Conflicting	Neutral	Neutral	Compliment	
	Navigation aids	Neutral	Neutral	Neutral	Neutral	Neutral				Facilitate	Facilitate	Facilitate	Facilitate		Facilitate	Facilitate			Facilitate	Facilitate	Facilitate	Neutral	Neutral	

Sectoral Interaction Matrices

8. Sectoral Interactions Survey

As part of a Forum project investigating interactions between key sectors utilising the Forth Estuary and Firth of Forth, we would like to hear of any examples of perceived interactions, (positive, negative or neutral) between activities in the Forth, both current and future. By understanding such interactions and evaluating existing management strategies to address them, it will be possible to develop a robust local marine plan for the Forth area.

Results from this work will therefore allow us to assess the ability of a future Forth marine spatial plan in addressing conflict or enhancing positive interactions, and your thoughts would be very much appreciated.

Activity 1	Activity 2	Nature of Interaction	Positive, negative or neutral	Location
-------------------	-------------------	------------------------------	--------------------------------------	-----------------

Scottish Marine Regions

- National Marine Plan due out for consultation in Spring 2011
- Smaller Scottish Marine Regions (SMR) need to be created to allow planning to take place at a local level
- How to create these regions:
 - e.g. physical characteristics (Firths, Islands); existing administrative boundaries
- <http://scotland.gov.uk/Topics/marine/seamanagement/regional/Consultation>
- Closing date 18 February 2011
- Forum will run an event to go over concepts in detail:
- **8 February, Holiday Inn Corstophine, Edinburgh, 1:30**

Scottish Marine Regions

- Marine Planning Partnerships to develop regional marine plans:
 - Wide range of stakeholder interests, including public authorities and those that reflect the commercial, conservation and recreational interests of a marine area.
- Three basic criteria for marine regions:
 - Physical/ecosystem characteristics
 - Existing administrative boundaries
 - Community affinity
- 10-12 regions planned
-

Coastal/Marine Aspects of Local Development Plans

- **Bringing Local Authorities Together**

- Inventory of Forth Local Development Plans with regard to coastal/marine aspects
- Including Shoreline Management Plans
- Timing of each plans' review cycle in mind of a marine planning partnership setting up in 2012.

- **Consideration of Coastal Planning Requirements**

- Planning requirements across the land/sea interface
- Aim to have a seamless link between terrestrial developments in a marine setting e.g. National Planning Framework 2 Initiatives

Adaptation and Evolution of Coastal Partnerships

What does a Forum offer now, and why was it created?

- Coastal zone management developing into a balanced mix of skills and viewpoints;
- Management aiming to become more broadly owned and consensual;
- Stakeholder expectations rise as they become genuine partners in the management process;
- Decision making aims to become better informed and skilled

Adaptation and Evolution of Coastal Partnerships

Adapting to drivers for change

- **Environmental change;**
- **Socio-economic change** – increased economic activity coupled with greater social/environmental sense of responsibility, plus the impact of the recession;
- **Governance change** – information-led management and Marine Scotland co-ordinated management

Adaptation and Evolution of Coastal Partnerships

How to respond?

- **New functions:** stakeholder services, shared services with local government, informing services (consultation), coast/offshore liaison;
- **New funding:** increase partnership grants, paid services, value for money;
- **New alliances:** project partnerships, service partnerships (e.g. MS), other coastal partnerships;
- **New members**



FORTH
ESTUARY
FORUM